

FILE NAME: INDOORS.PDF

# INDOORS

MODEL NO. 03-0001

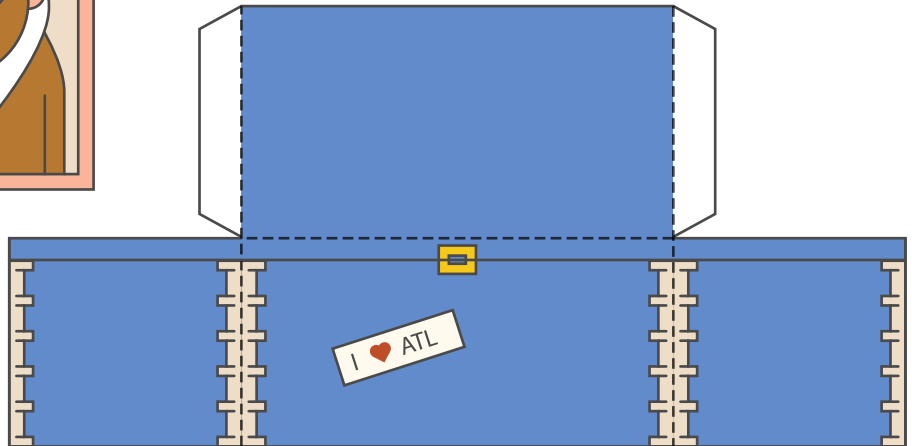
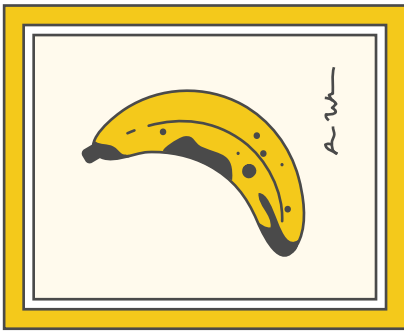
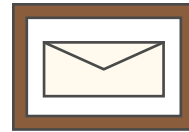
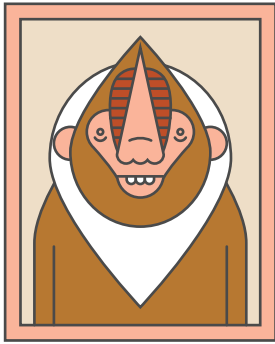
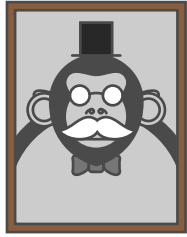
PAGE 1/5

## ASSEMBLY INSTRUCTIONS

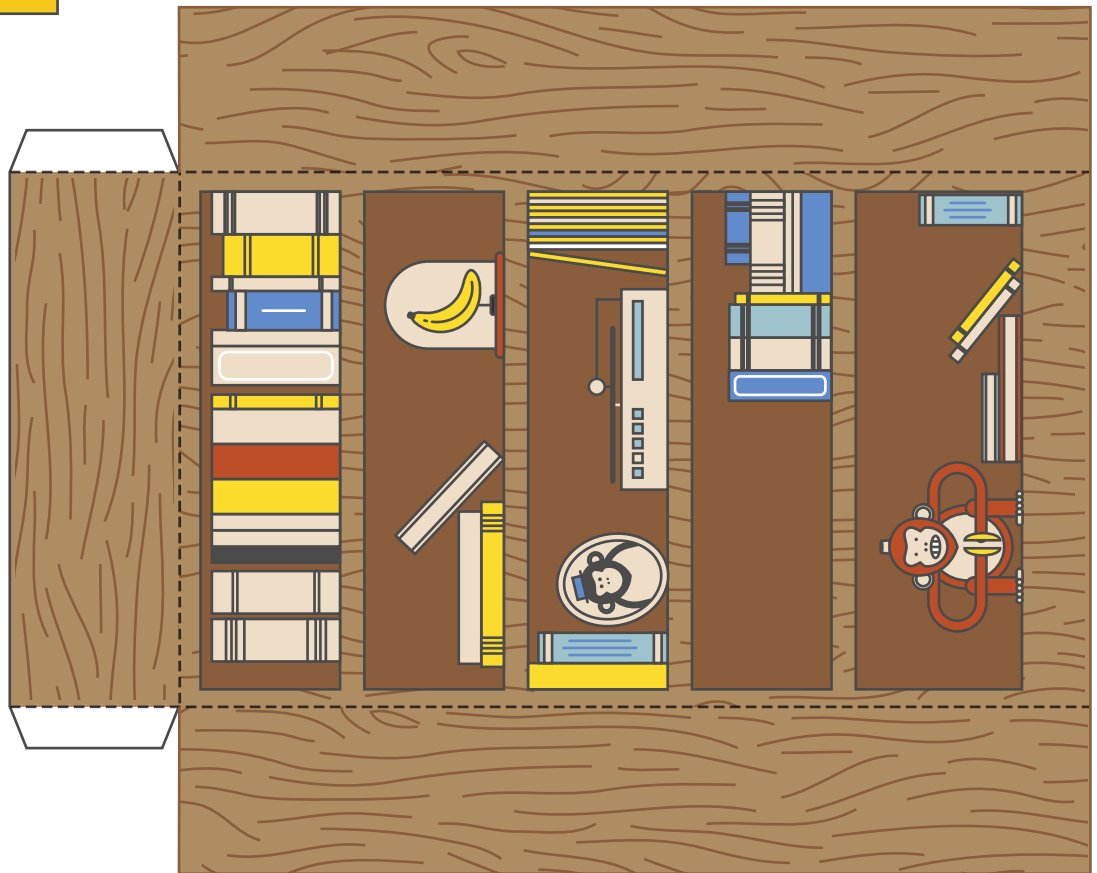
- 1 CUT ALONG THE DOTTED LINE
- 2 FOLD ALONG SOLID LINE
- 3 FASTEN TAB A UNDER TAB B



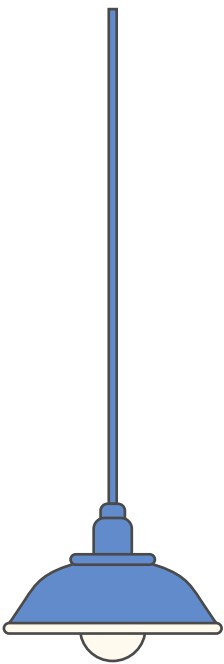
## PICTURES & ART



## BOOKCASE



## LIGHT FIXTURE



FILE NAME: INDOORS.PDF

## PAPER LIVING ROOM

MODEL NO. 03-0001

PAGE 2/5

### ASSEMBLY INSTRUCTIONS

- 1 CUT OUT THE PIECES WITH SCISSORS OR CUTTING KNIFE
- 2 SCORE AND FOLD ALONG THE FOLDING LINES
- 3 USE GLUE OR DOUBLE-SIDED TAPE TO FASTEN THE TABS



— CUT LINE



- - - FOLD LINE

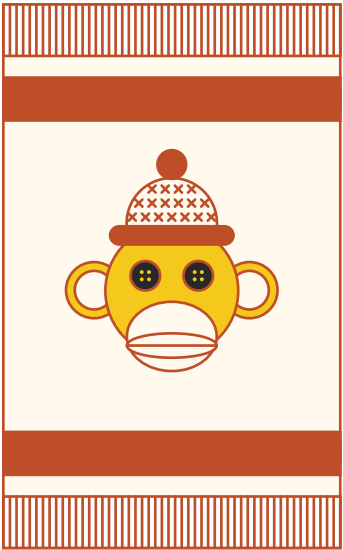
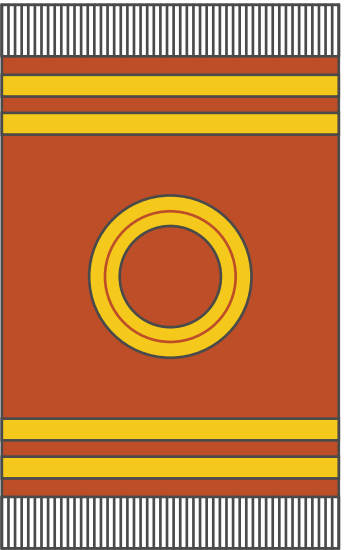


— GLUE OR TAPE

FLOOR

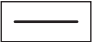


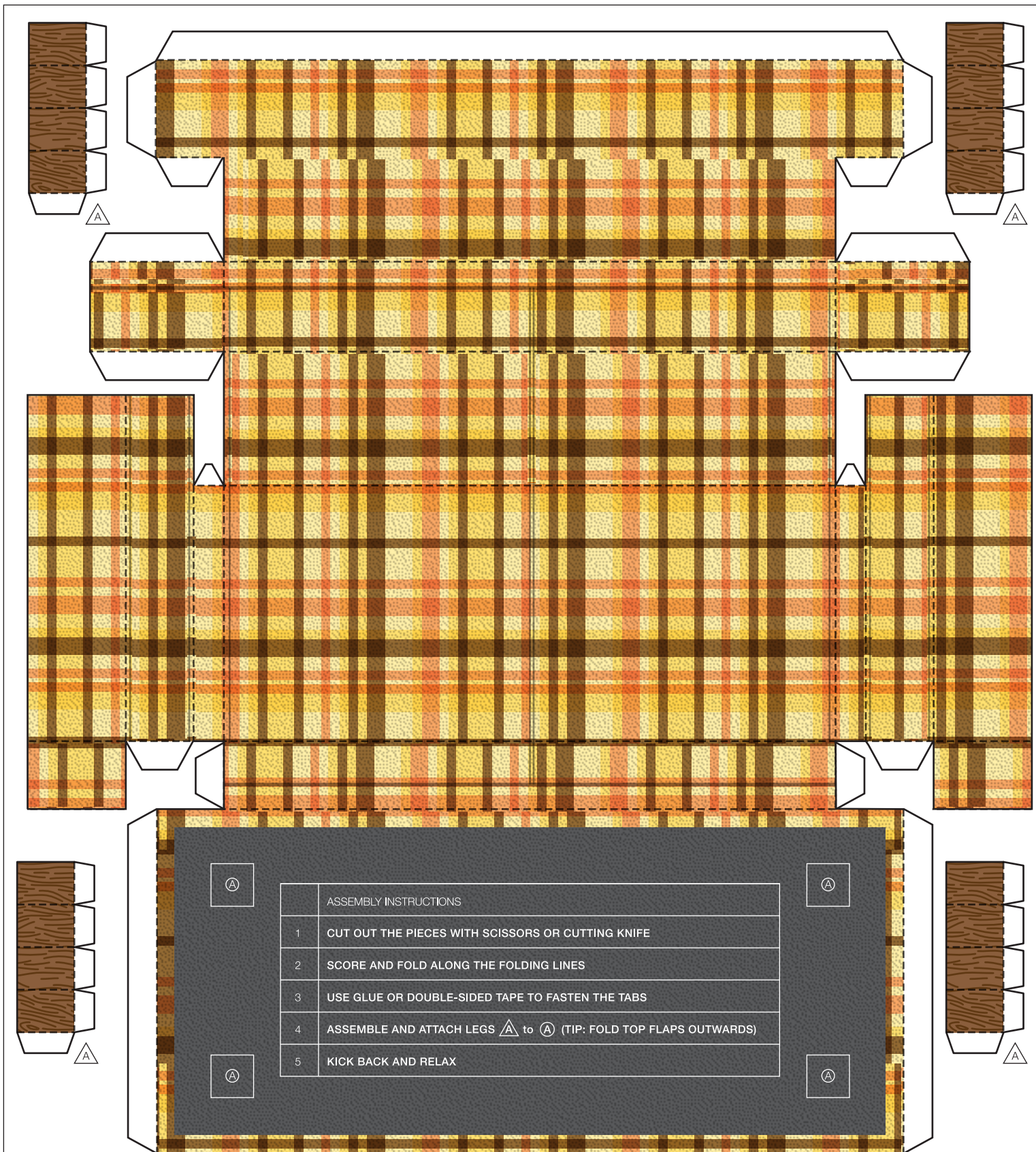
RUGS



FILE NAME: INDOORS.PDF

LIVING ROOM FLOOR			ASSEMBLY INSTRUCTIONS
		1	CUT OUT THE FLOOR AND RUGS
		2	HANG OUT IN YOUR BUDDY'S NEW PAPER CRIB
MODEL NO. 03-0001	PAGE 3/5		

 — CUT LINE



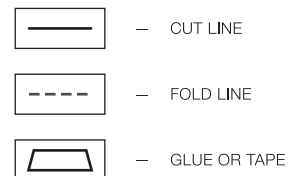
FILE NAME: INDOORS.PDF

## PAPER SOFA & CHAIR

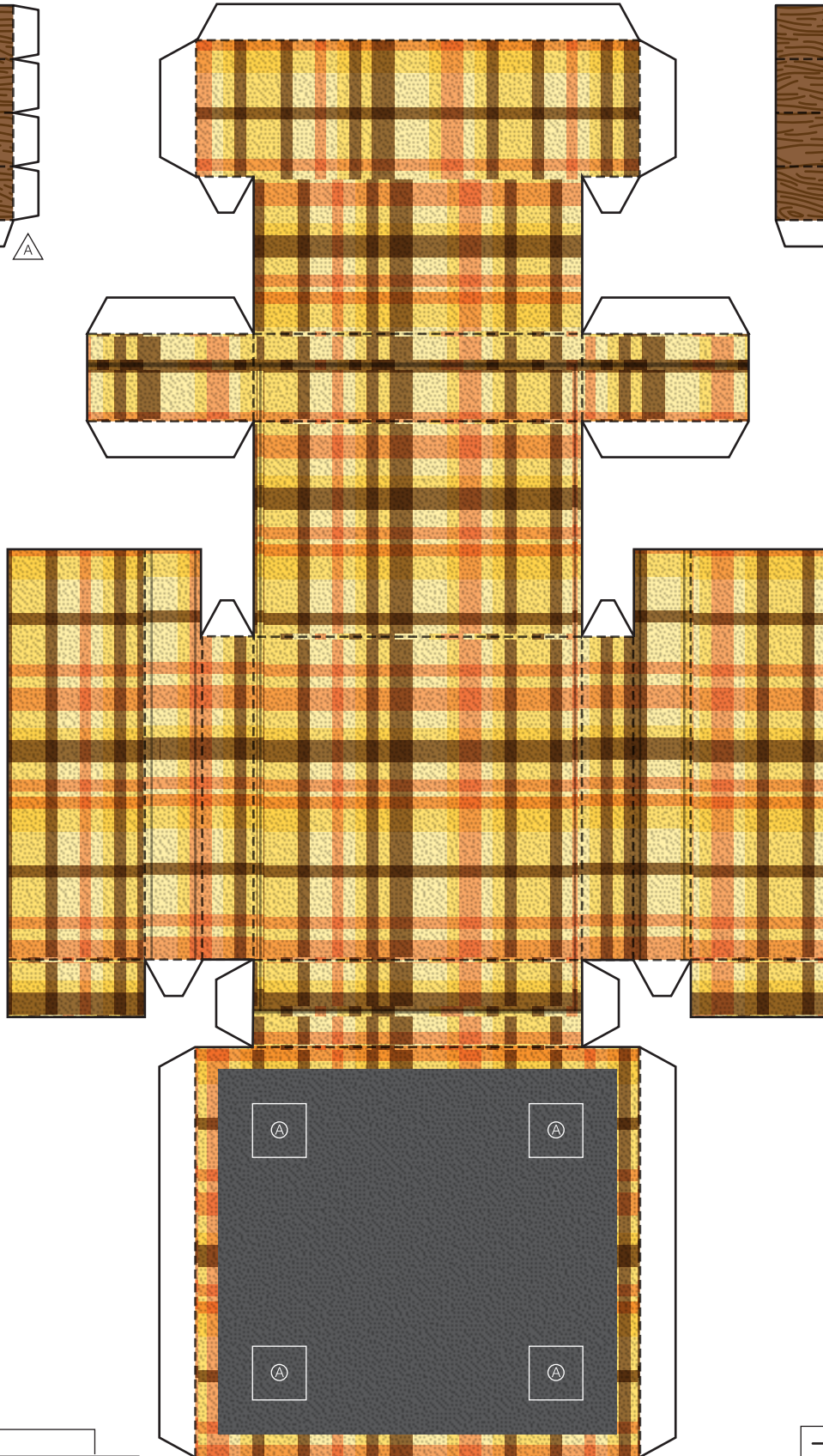
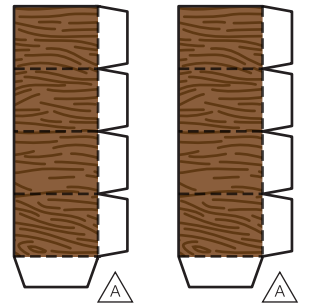
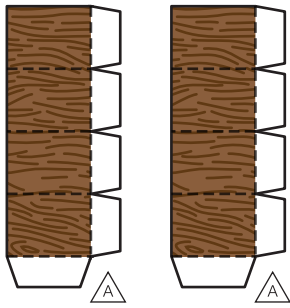
MODEL NO. 03-0001

PAGE 4/5

SEE SOFA BOTTOM FOR ASSEMBLY INSTRUCTIONS







FILE NAME: INDOORS.PDF

## PAPER SOFA & CHAIR

MODEL NO. 03-0001

PAGE 5/5

SEE SOFA BOTTOM FOR ASSEMBLY INSTRUCTIONS

