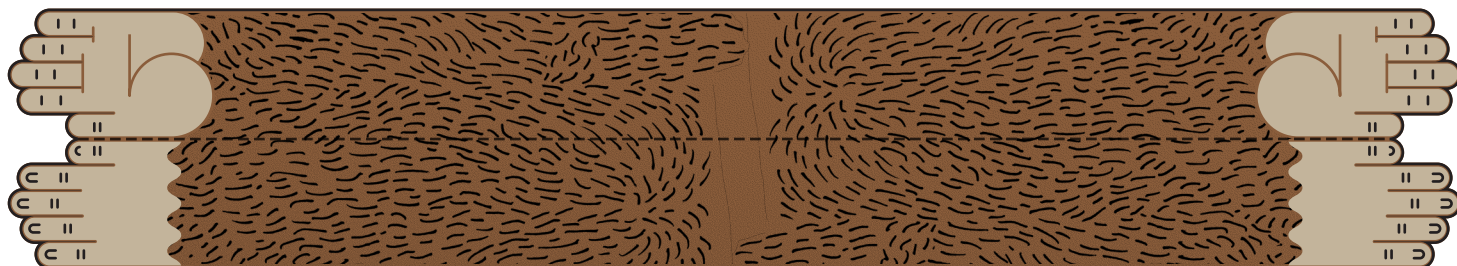


ARMS



NOTE:
FASTEN THE ARMS WITH A
PIECE OF DOUBLE-SIDED TAPE
FOR MAXIMUM SATISFACTION.

FILE NAME: PAPERBUDDY.PDF

PAPER BUDDY with HAT & BAG

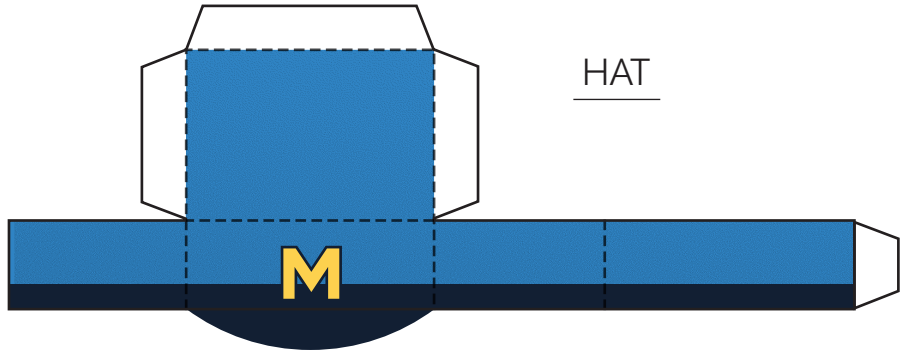
MODEL NO. 01-0002

PAGE 1/2

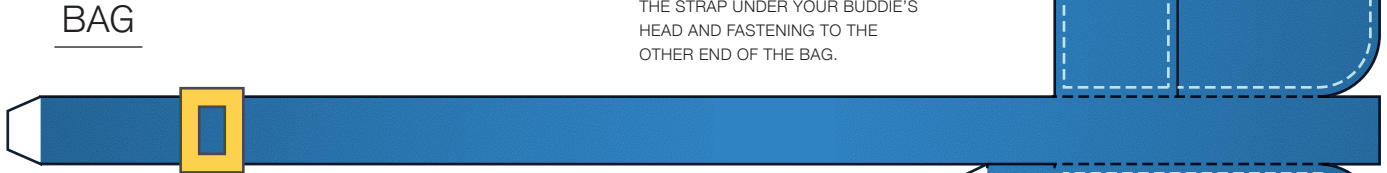
ASSEMBLY INSTRUCTIONS

- 1 CUT OUT THE PIECES WITH SCISSORS OR CUTTING KNIFE
- 2 SCORE AND FOLD ALONG THE FOLDING LINES
- 3 USE GLUE OR DOUBLE-SIDED TAPE TO FASTEN THE TABS
- 4 ASSEMBLE THE PAPER BUDDY, APPLY THE HAT AND BAG
- 5 VISIT MAILCHIMP.COM/PAPER-BUDDY FOR MORE ACCESSORIES
- 6 TWEET OR INSTAGRAM #PAPERBUDDY





HAT



BAG

NOTE:

BAG CAN BE WORN BY SLIDING THE STRAP UNDER YOUR BUDDIE'S HEAD AND FASTENING TO THE OTHER END OF THE BAG.

BODY

NOTE:

DO NOT IGNORE THE CUT LINES ON SIDES OF THE BODY. THESE ARE FOR THE ARMS.

